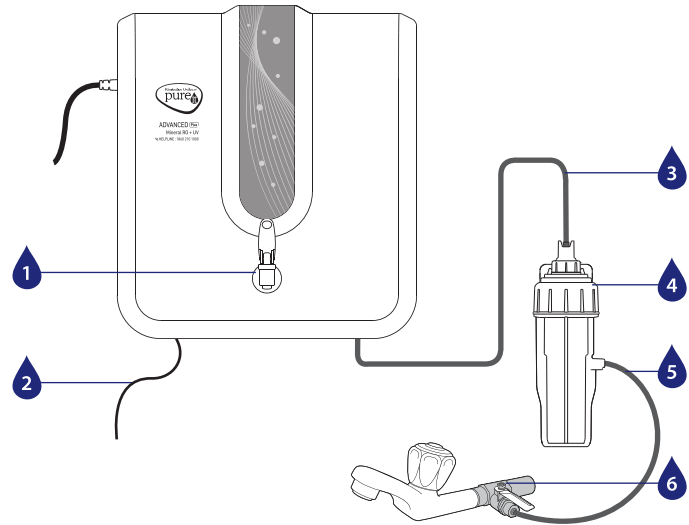


Welcome to the Pureit family



INSTRUCTION MANUAL

KNOW YOUR PUREIT ADVANCED PLUS MINERAL RO+UV PURIFIER



- 01. Tap
- 02. Reject Water Tube
- 03. Compound ESF Outlet Tube

- 04. Compound ESF
- 05. ESF Inlet Tube
- 06. Integrated Ball Valve Diverter

UNIQUE FEATURES OF PUREIT ADVANCED PLUS MINERAL RO+UV PURIFIER



ADVANCED 6 STAGE PURIFICATION PROCESS WITH RO+ UV
Every drop of water you drink is sweet and always safe.



100% RO PURIFIED WATER
All water passes through RO ensuring no mixing of purified and impure water. Only RO can remove harmful chemicals like Lead, Mercury, etc.



INCLUDES MINERAL CARTRIDGE
Enriches water by adding essential minerals like Calcium and Magnesium.



TURNES HARD WATER UP TO 2000 PPM INTO SOFT AND SWEET WATER



LARGE STORAGE CAPACITY OF 5L
You will never run out of purified water.



POWER SAVING MODE
Water purifier goes on stand-by once the tank is full, saving power.



UNITED STATES ENVIRONMENT PROTECTION AGENCY (USEPA) COMPLIANT
Meets the toughest safety standards by removing 1 Cr virus and 10 Cr bacteria from 1L water.

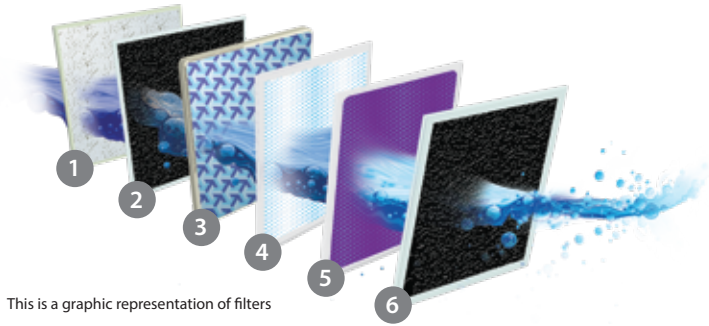


100% FOOD GRADE BPA FREE PLASTIC***
Prevents harmful toxins from leaching into water, unlike non-food grade plastics.



***Applicable for all water contact parts.

PUREIT ADVANCED PLUS MINERAL RO+UV PURIFIER'S ADVANCED PURIFICATION PROCESS



This is a graphic representation of filters

1. Pre-Sediment Filter

Removes fine and coarse particulate impurities/dirt and improves the life of the Carbon Filter.

2. Pre-RO Carbon Filter

Removes chlorine and organic impurities like harmful pesticides. It also absorbs bad taste and odour causing organic compounds from water.

3. Mini Filter

Filters water further to ensure removal of ner particulate impurities.

4. RO Membrane

Removes dissolved salts, hardness, pesticides and heavy metals like arsenic, lead and mercury. It also removes microbial contaminants like bacteria, virus, protozoa and cysts.

5. UV Chamber

Acts as an additional stage of purification to further inactivate bacteria, virus and parasites to deliver safe water.

6. Post-RO Carbon Filter

This level of purification acts as a polisher and enhances the taste of purified water.



INSTALLING YOUR PUREIT ADVANCED PLUS MINERAL RO+UV PURIFIER

1. The purifier should be installed by a trained Pureit technician.
2. It can be wall-mounted or used as a table top purifier.
3. The purifier should be placed in area which is free of ants/insects/other pests.
4. The purifier should be placed close to the plumbed inlet connection (not more than 2 metres).
5. Do not install the purifier above any electric socket.
6. Avoid sharp bends to the pipes of the product.
7. Do not use an extension cord.
8. Before installing the purifier please check the inlet pressure.
9. Make sure you test the input water TDS (Total dissolved salts) before installing the purifier. The maximum input TDS should not exceed 2000ppm.
10. Do not connect the purifier to any hot water tap.
11. Please do not terminate the reject line tubing directly into the drainage (keep it hanging over the drainage).
12. Do not place the unit where it will be exposed to freezing and/or direct sunlight and ensure there is enough ventilation.

TAKING CARE OF YOUR PUREIT ADVANCED PLUS MINERAL RO+UV PURIFIER

Cleaning

1. Clean the tap nozzle using disinfectants like bleach/hypochlorite (50 PPM available chlorine). Discard 2 litres of water after cleaning the dispenser.
2. Clean the external portion of the purifier using a dry cloth only. Do not use any detergent or soap.
3. Do not clean aggressively or rub the surface as this might lead to scratches on the parts.
4. Never splash water on the purifier while cleaning.
5. Do not try to open the purifier for cleaning or for any replacements. This can be done only by a qualified company personnel or an authorised agent.
6. You should maintain good hygiene in the area around your water purifier. Ensure that this area is free of ants/insects/other pests.
7. Do take care of the reject line and other tubes while cleaning the purifier else water can flow into the kitchen.

Storage Tank

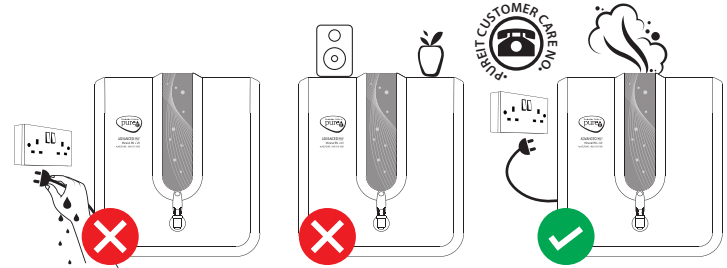
1. Discard the water in the Storage Tank once in 15 days through the tap.
2. Always drain the water in the Storage Tank if you have not used the purifier more than 2 days.
3. Do not allow any foreign or unexpected material (like dust/ants/insects/other pests) to enter into the storage tank. The filtered water in the storage tank may deteriorate in the process.

Other Important Instructions

1. When you are away or during over head tank cleaning always ensure to switch off the electrical power and the ball valve.
2. Do not put any heavy or sharp objects on the purifier.
3. Please dispose the used consumables like Sediment Filters, Carbon Filters and Membranes along with the other household waste through the municipal disposal system.

Disposal Guidelines (Electrical): To prevent possible harm to the environment or human health from uncontrolled waste disposal, please separate electrical items in this product such as power supply adaptor, control circuits, LED panel and wiring from other types of waste and recycle them responsibly to promote sustainable use of material resources. Contact either the retailer where you purchased this product or local government office for details of where and how these items can be taken for environmentally safe recycling.

KEEP YOURSELF SAFE



1. Do not consume the water from the waste water tube for drinking purpose. However, you can use that water for gardening or cleaning the floors.
2. Do not plug or unplug the power cord with wet hands. Ensure that the plug isn't wet while plugging in, or plugging out to avoid risks such as electrical shock or fire.
3. Keep the cord away from wiring conjunctions to avoid hazard. Never put the cord under rugs, near heat resistors, radiators, stoves or heaters.
4. If the power cord is damaged, the power cord must be replaced and not used.
5. In case of any smoke or burning smell, remove the plug immediately and call the Pureit Helpline.
6. When shifting your house, get the purifier duly inspected and packed by the Pureit service technician. Remove water from the Storage Tank and pack the purifier properly in case of shifting.
7. Please ensure to switch off the power whenever you turn off the Ball Valve.
8. The point-of-use reverse osmosis drinking water treatment systems addressed by NSF-58 standard are designed to be used for reduction of specific substances that may be present in drinking water supplies (public or private) which are considered to be microbiologically safe and are of known quality.
9. The output water may continue to have flora which are harmless and pose no health hazard to normal healthy adults and children.

TECHNICAL SPECIFICATIONS

PUREIT ADVANCED PLUS MINERAL RO+UV

Model	Pureit Advanced Plus Mineral RO+UV
Dimensions (HXWXD)	380mm x 166mm x 423mm
Weight (Complete Unit)	6.8 Kg
Flow Rate	Upto 20 LPH
Storage Tank Capacity	5 Litres ¹
6 Stage Purifying Technology	Pre-Sediment Filter, Pre-RO Carbon Filter, Mini Filter, Reverse Osmosis Membrane, UV Chamber and Post-RO Carbon Filter
Membrane Type	Thin film composite spiral wound
Pump Type	Diaphragm pump, 24V DC
% Recovery ²	Upto 40%
TDS Reduction ³	90% (min.)
Input Water	PH range 6.5-8.5, Temperature range 10°C- 40°C
Power Rating	36 Watts
Pressure Rating	10-30 PSI ⁴
Input Voltage	100-300 V a.c., 50 Hz
Material of construction for plastic parts	Food safe, non-toxic plastics
Length of Power Cord	1.5 metres
Total Dissolved Solids in input water	Up to 2000 mg/lit ⁵
Total Hardness	500 mg/lit (max.)
Iron in Input Water	0.3 mg/lit (max.)
Turbidity in Input Water	1 NTU (max.)

Germkill Kit™ (GKK)

Material of Construction	Food safe, non-toxic plastics
GKK	Pre-Sediment Filter - 1 No. Pre-RO Carbon Filter - 1 No. Integrated Post RO Carbon & TDS Filter - 1 No. Mini Filter - 1 No. RO Membrane - 1 No.
Germkill performance standard	Meets stringent international criteria for microbiologically safe drinking water - e.g. Environmental Protection Agency (EPA), USA

Ordering GKK

There is 1 Sediment Filter (SF) and 1 Germ Kill Kit (GKK) in the device that need to be replaced periodically.

SF	May require cleaning/replacement basis the water quality
GKK	Needs to be replaced approximately every 1 year ⁶ from the date of installation

Please call 1860-210-1000 for ordering your HUL Pureit GKK to ensure safe drinking water, always!

¹ 4.8 ~ 5.2 under running water conditions.

² Permeate flow rate and recovery are based on standard test conditions and may vary depending on input water quality, TDS, pressure and life of Filter elements.

³ Input water quality and TDS content are important determinants of output water quality.

⁴ If input pressure exceeds 30 PSI, please install a company provided pressure reducing valve at an additional cost.

If the pressure is less than 10 PSI then you need to buy 'Pressure enhancing pump' at an additional cost.

Device should not be installed in a house where input pressure is greater than 60 PSI.

Post-RO Carbon Filter fitted in the device may need to be changed intermittently at extra cost in case you face smell issues.

Technical specifications are subject to change or improvement without prior notice.

⁵ In case the TDS is >1000 PPM, a company provided anti-scalant is recommended to be installed

This has to be purchased at extra cost.

⁶ This is based on standard consumption of 10 litres per day, with an input TDS of 750 PPM, 25° water and 18 PSI

pressure. Depending on the variation from above you may need to change the GKK / parts even before the stipulated time.

FAQs

How does Pureit Advanced Plus Mineral RO+UV purify water?

Pureit Advanced Plus Mineral RO+UV has a 6-stage purification process which ensures you to get water that is 'As Safe As Boiled Water' and also removes excess Total Dissolved Solids (TDS) to make your water tastier.

Stage 1st

Pre-Sediment Filter: Removes fine and coarse particulate impurities/dirt and improves the life of the carbon filter.

Stage 2nd:

Pre-RO Carbon Filter: Removes chlorine and organic impurities like harmful pesticides. It also absorbs bad taste odour causing organic compounds from water.

Stage 3rd:

Mini Filter: Filters water further to ensure removal of finer particulate impurities.

Stage 4th:

RO Membrane: Removes dissolved salts, hardness, pesticides, fluoride and heavy metals like arsenic, lead and mercury. It also removes microbial contaminants like bacteria, virus, protozoa and cysts.

Stage 5th:

UV Chamber: Acts as an additional stage of purification to further inactivate bacteria, virus and parasites to deliver safe water.

Stage 6th:

Post-RO Carbon Filter: Last level of purification acts as a polisher and enhances the taste of purified water.

What is the storage capacity of Pureit Advanced Plus Mineral RO+UV?

Pureit has Storage Tank capacity of upto 5 litres. The storage tank is fully automatic and well shielded and as and when you take water out of the tank, the purification process starts automatically again and refills the storage tank.

How much time does it take to purify water in Pureit Advanced Plus Mineral RO+UV?

Pureit can purify water up to 20 litres per hour depending on the device you have purchased. However, the time taken to purify depends on the life of the filters, the input water pressure, TDS and other impurities present in the water.

Does Pureit Advanced Plus Mineral RO+UV remove arsenic, fluoride and nitrates?

Like other ions, the RO technology can also remove arsenic, fluoride and nitrates.

How will I get new consumables/membranes replaced?

You need to call the Pureit helpline and order the consumables. The customer care specialist will visit your place and replace the consumable/Germkill Kit at a nominal cost.

What are all the consumables which are to be replaced?

You need to replace / clean the sediment filter basis water quality and GKK approximately every 1 year from date of installation.

Can I drink the first purification cycle of water from the purifier?

No, recommendation is to throw the first cycle of water that is filled in the storage tank when the new Pureit purifier is installed and also whenever the Germkill Kit are replaced.

Can I open and service my purifier?

It is not recommended to open and service purifier by an individual. Call our Pureit helpline if you face any issue which requires servicing and opening of the purifier.

Can I use reject water?

It is not recommended to use the reject water for any kind of human/pets consumption (drinking or cooking). It may be used for gardening or cleaning floors.

What should I do if any part of purifier is broken?

Please call the Pureit helpline. Our technicians will visit your house and guide you on the repairs required. There will be a nominal visiting charge and you would need to buy the parts required.

What should I do if there is leakage from the purifier?

First switch off the ball valve if you find any leakage from the purifier and turn off the power switch. Check for any visual improper fitment and then call our Pureit helpline number and register a service request.

How long the stored water in Pureit Advanced Plus Mineral RO+UV can be used for drinking?

You can use stored water for 2 days. If it is not used for more than 2 days we advise you to discard that water, refill and then consume.





WIDE RANGE OF RO PURIFIERS FROM PUREIT

Disclaimer: All images used in this manual are illustrative and the actual product may differ.