

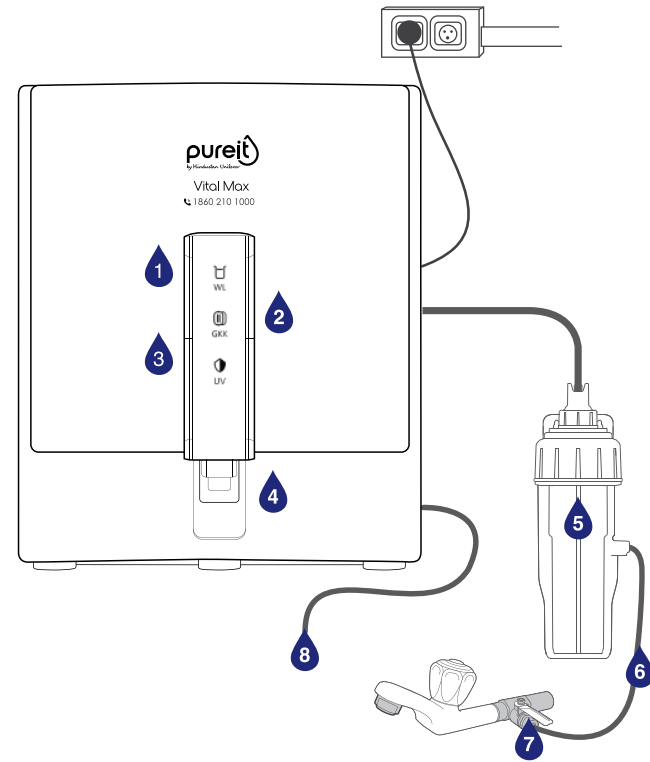


Welcome to the Pureit family

INSTRUCTION MANUAL

Model number: WR3740P

KNOW YOUR PUREIT VITAL MAX



- 01. Storage Tank Indicator
- 02. GKK Life Indicator
- 03. UV Status Indicator
- 04. Tap Push Lever

- 05. Compound Sediment Filter Assembly
- 06. Inlet Water Tube
- 07. Ball valve Diverter
- 08. Waste Water Tube

UNIQUE FEATURES



Filtra Power Technology

NextGen RO, globally proven to remove numerous viruses, bacteria, cysts, chemicals, pesticides, etc.



Advanced 7 Stage Purification Process with RO+UV

Every drop of water you drink is sweet and always safe



Efficient UV Sterilization***

Kills up to 99.9% of bacteria, virus & cyst with highly efficient UV lamp



Mineral Enhancer Cartridge

Enriches water by adding essential minerals like Calcium & Magnesium



ECO Recovery™ Technology

Delivers efficient purification to give a high water recovery rate of up to 60%*



Smartsense indicators

Advance alert warns you 15 days** before filter expiry & auto shut off™ stops water if filter is not changed, providing safe & sweet water



High Water Storage Capacity

Comes with 7-liters⁵ in-built storage tank with a 24L/H higher flow rate, ensuring purified water all the time



High Speed Purification of up to 24 Litres/hour* (highest among leading RO's*)

Purifies water for the entire day in less than 1 hour**



Membrane Protector

Ensures that the RO Membrane lasts long and protects components from scaling, foul smell & contaminations



USEPA Compliant***

Meets the tough safety standards by removing 1 crore virus and 10 crore bacteria from 1 litre water



100% Food grade plastic*

Prevents harmful toxins from leaching into water, unlike non-food grade plastics

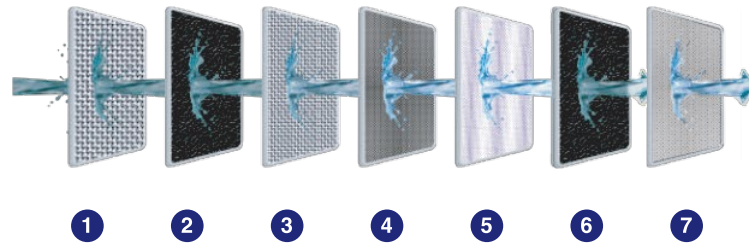
* Under test condition, Input TDS – 750 ppm, Turbidity – <1 NTU, Input Pressure – 10 psi, Input Hardness – 300 ppm, Temp. – Room temp

** Advance Alert System will alert you 15 days before or 15 hours before completion of every 275 hours of pump running time. The purifier will communicate the alert only if the purifier is in a switched-on condition during the scheduled alert time. Post the completion of the scheduled alert time, auto shut-off of water will be activated automatically for the GKK parts

*** Post RO purified water that's part of purification stages in the device

For all water contact parts

UNIQUE TECHNOLOGY



This is a graphic representation of filters

1. Pre-Sediment filter

Removes fine and coarse particulate impurities/dirt and improves the life of the Carbon Filter.

2. Pre-RO Carbon Filter

Removes chlorine and organic impurities like harmful pesticides. It also absorbs bad taste and odour causing organic compounds from water.

3. Mesh Filter

Filters water further to ensure removal of finer particulate impurities.

4. RO Membrane

Removes dissolved salts, hardness, pesticides and heavy metals like arsenic, lead and mercury. It also removes microbial contaminants like bacteria, virus, protozoa cysts.

5. UV Chamber

Acts as an additional stage of purification to further inactivate bacteria, virus and parasites to deliver safe water.

6. Post-Carbon

This level of purification acts as a polisher and enhances the taste of purified water.

7. CarbiTrap

Filters water to further ensure removal of loose carbon particles.

Assumption: 5 member family needing 20 litres of water every day (4 litres per person per day)

Exceeds USEPA GERM KILL Standard guide by removing 1 crore viruses and 10 crore bacteria from every litre of water

^ Pureit Vital Max has highest purification rate across filters life when compared to leading RO brands (Kent Prime Plus and Aquaguard Enhance RO+UV) - Under test condition, Input TDS – 750 ppm, Turbidity – <1 NTU, Input Pressure – 10 psi, Input Hardness – 300 ppm, Temp. – Room temp.

\$ 6.5 to 7 liters in running water condition

INSTALLING YOUR PUREIT VITAL MAX

1. The purifier should be installed by a trained Pureit technician.
2. It can be wall-mounted or used as a table top purifier.
3. The purifier should be placed in area which is free of ants/insects/other pests.
4. The purifier should be placed close to the plumbed inlet connection (not more than 1.5 metres).
5. Do not install the purifier above any electric socket.
6. Avoid sharp bends to the pipes of the product.
7. Do not use an extension cord.
8. Before installing the purifier please check the inlet pressure.
9. Make sure you test the input water TDS (Total dissolved salts) before installing the purifier. The maximum input TDS should not exceed 2000ppm.
10. Do not connect the purifier to any hot water tap.
11. Please do not terminate the reject line tubing directly into the drainage (keep it hanging over the drainage).
12. Do not place the unit where it will be exposed to freezing and/or direct sunlight and ensure there is enough ventilation.

TAKING CARE OF YOUR PUREIT VITAL MAX

Cleaning

1. Clean the tap nozzle using disinfectants like bleach/hypochlorite (50 PPM available chlorine). Discard 2 litres of water after cleaning the dispenser.
2. Clean the external portion of the purifier using a dry cloth only. Do not use any detergent or soap.
3. Do not clean aggressively or rub the surface as this might lead to scratches on the parts.
4. Never splash water on the purifier while cleaning.
5. Do not try to open the purifier for cleaning or for any replacements. This can be done only by a qualified company personnel or an authorised agent.
6. You should maintain good hygiene in the area around your water purifier. Ensure that this area is free of ants/insects/other pests.
7. Do take care of the reject line and other tubes while cleaning the purifier else water can flow into the kitchen.

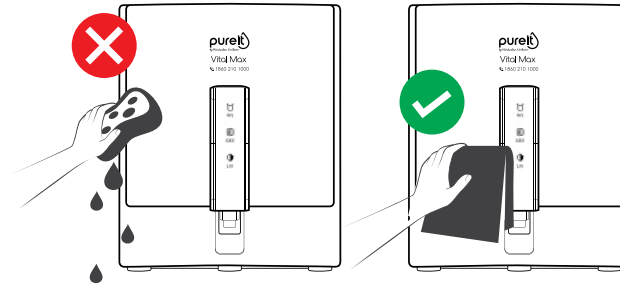
Storage Tank

1. Discard the water in the Storage Tank once in 15 days through the tap.
2. Always drain the water in the Storage Tank if you have not used the purifier more than 2 days.
3. Do not allow any foreign or unexpected material (like dust/ants/insects/other pests) to enter into the storage tank. The filtered water in the storage tank may deteriorate in the process.

Other Important Instructions

1. When you are away or during overhead tank cleaning always ensure to switch off the electrical power and the ball valve.
2. Do not put any heavy or sharp objects on the purifier.
3. Please dispose the used consumables like Sediment Filters, Carbon Filters and Membranes along with the other household waste through the municipal disposal system.

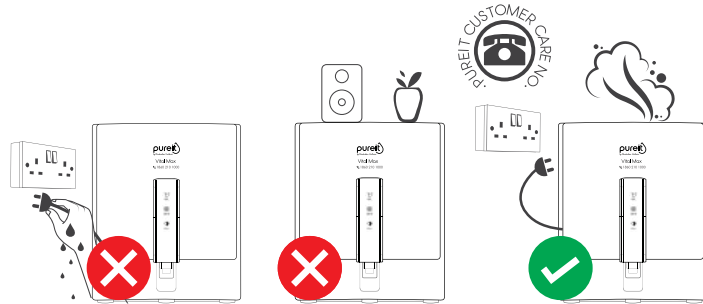
Device



1. You can clean the device by using disinfectants like bleach/hypochlorite (50 ppm available chlorine). Discard 2 litres of water after cleaning the tap.
2. External portion of the purifier must be cleaned using dry cloth only. Do not use any detergent or soap.

Disposal Guidelines (Electrical): To prevent possible harm to the environment or human health from uncontrolled waste disposal please separate electrical items in this product such as power supply adaptor, control circuits, LED panel and wiring from other types of waste and recycle them responsibly to promote sustainable use of material resources. Contact either the retailer from whom you purchased this product or local government office for details of where and how these items can be taken for environmentally safe recycling.

KEEP YOURSELF SAFE



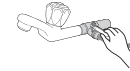
1. Do not consume the water from the waste water tube for drinking purpose. However, you can use that water for gardening or cleaning the floors.
2. Do not plug or unplug the power cord with wet hands. Ensure that the plug isn't wet while plugging in, or unplugging out to avoid risks such as electrical shock or fire.
3. Keep the cord away from wiring conjunctions to avoid hazard. Never put the cord under rugs, near heat resistors, radiators, stoves or heaters.
4. If the power cord is damaged, the power cord must be replaced and not used.
5. In case of any smoke or burning smell, remove the plug immediately and call the Pureit Helpline.
6. When shifting your house, get the purifier duly inspected and packed by the Pureit service technician. Remove water from the Storage Tank and pack the purifier properly in case of shifting.
7. Please ensure to switch off the power whenever you turn off the Ball Valve.
8. The point-of-use reverse osmosis drinking water treatment systems addressed by NSF-58 standard are designed to be used for reduction of specific substances that may be present in drinking water supplies (public or private) which are considered to be microbiologically safe and are of known quality.
9. The output water may continue to have flora which are harmless and pose no health hazard to normal healthy adults and children.

CLEANING AND MAINTENANCE

Sediment Filter

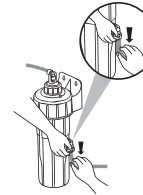
STEP 1:

Close the ball valve before opening ESF housing for cleaning



STEP 2:

Remove the water inlet tube which is attached to the housing



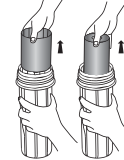
STEP 3:

Rotate the housing clock-wise and remove it completely from the cap



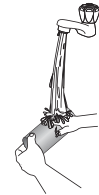
STEP 4:

Take out the grey coloured Carbon Sleeve and the Sediment Filter from the housing



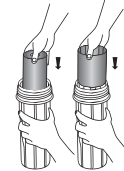
STEP 5:

Clean the Sediment Filter under jet of water, rub by hand / tap gently to clean



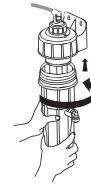
STEP 6:

After cleaning the Filter, put it back in the housing and then put the grey coloured Carbon Sleeve back into the housing



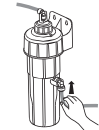
STEP 7:

Insert the housing inside the cap and rotate it anticlockwise to engage the threads Ensure the housing is tightened till it's original marking



STEP 8:













Connect the water inlet tube to the housing



⚠ ATTENTION

- Close the ball valve before opening SF housing for cleaning.
- Please do not use any abrasive / pointed tool to clean the Sediment Filter as it may damage the Sediment Filter.
- In case you observe the rubber ring is dirty, clean the rubber ring & fix it on the housing again properly.
- Clean the inner portion of the housing as well.
- If required, a Spanner for opening ESF housing can be bought from Pureit service technician.

LED INDICATOR GUIDE

Pureit Vital Max WR3740P		
STATUS	DESCRIPTION	
WL		
 Off	Tank not full	
 Solid White	Tank full	
 Blinking White	No input water / low input pressure	
GKK		
 Solid White	SF & GKK OK	
 Blinking White	Time to clean or replace SF (Call Pureit helpline for assistance)	
 Blinking Red	Time to replace GKK (Call Pureit helpline for assistance)	
 Solid Red	Replace GKK (Call Pureit helpline for assistance)	
UV		
 Solid White	UV OK	
 Solid Red	UV fault (Call Pureit helpline for assistance)	
 Alternate blinking of Red & White	Electrical fault (Call Pureit helpline for assistance)	
Pureit helpline No. 1860-210-1000  		
Caution: Always switch off the power supply of the device, while turning off its water supply.		

Indication for sediment filter (SF) will occur to clean/replace sediment filter after approximately 132 hours of pump running time. You can either clean SF or call Pureit helpline to replace filter at a nominal cost.

Indication for GKK will occur to replace filter after approximately 260 hours of pump running time (typically gives 6000 liters of purified water under test conditions of 10 psi input pressure 750 TDS 25°C, any variations in these test conditions may lead to change in purified water volume), Please call Pureit helpline for assistance.

While the GKK and Sediment filter have fixed replacement schedule, you might be required to change the SF or GKK in the interim depending on quality of input water.

TECHNICAL SPECIFICATIONS#

Pureit Vital Max Model number: WR3740P	
Model	Pureit Vital Max
Dimensions (HxWxD)	366x300x306 (mm)
Dry Weight (Complete Unit)	7.1 kg
Flow Rate	Upto 24 litres per hour
Storage Tank Capacity ¹	7-litres ¹
7 Stage Purifying Technology	Pre-Sediment Filter, Pre-RO Carbon Filter, Mesh Filter, Reverse Osmosis Membrane, UV Chamber, Post-RO Carbon Filter, CarbiTrap
Membrane Type	NSF certified - Thin film composite spiral wound
Pump Type	Diaphragm pump, 24V DC
% Recovery ²	Up to 60%
TDS Reduction ³	90% (min.)
Input Water	pH range 6.5-8.5, Temperature range 10°C- 40°C
Power Rating	42W
Pressure Rating	Min 10 PSI, Max 30 PSI ⁴
Input Voltage	100 – 240 VAC, 50/60 Hz (Device can withstand voltage fluctuation from 100 to 300 V AC.)
Material of construction	Food safe, non-toxic plastics for plastic parts
Length of Power Cord	1.5 metres
Total Dissolved Solids in input water	Up to 2000 mg/litre
Total Hardness	500 mg/lit (max)
Iron in Input Water	0.3 mg/lit (max) ⁵
Turbidity in Input Water	1 NTU (max)
Germkill Kit™ GKK	
Material of construction	Food safe, non-toxic plastics
GKK	Pre Sediment filter- 1 number Pre-RO carbon filter- 1 number Mesh filter- 1 number Anti scalant cartridge- 1 number RO membrane- 1 number Integrated TDS + Post carbon filter- 1 number Flow restrictor 200cc- 1 number

Germkill performance standard Meets stringent international criteria for microbiologically safe drinking water—e.g., Environmental Protection Agency (EPA), USA

¹ 6.5 to 7 under running water conditions.

² Permeate flow rate and recovery are based on standard test conditions and may vary depending on input water quality, TDS, pressure and life of Filter elements.

³ Input water quality and TDS content are important determinants of output water quality.

⁴ If input pressure exceeds 30 PSI, please install a company provided pressure reducing valve at an additional cost. If the pressure is less than 10 PSI then you need to buy 'Pressure enhancing pump' at an additional cost. Device should not be installed in a house where input pressure is greater than 60 PSI.

Post-RO Carbon Filter fitted in the device may need to be changed intermittently at extra cost in case you face smell issues

⁵ In case the iron is higher than this, it is recommended to install a company provided iron removal filter at extra cost.

Technical specifications are subject to change or improvement without prior notice.

FAQS

How does Pureit Vital Max purify water?

Pureit Vital Max has a 7-stage purification process which ensures you to get water that is 'As Safe As Boiled Water' and also removes excess Total Dissolved Solids (TDS) to make your water tastier.

Stage 1st:

Pre-Sediment Filter: Removes fine and coarse particulate impurities/dirt and improves the life of the carbon filter.

Stage 2nd:

Pre-RO Carbon Filter: Removes chlorine and organic impurities like harmful pesticides. It also absorbs bad taste odour causing organic compounds from water.

Stage 3rd:

Mini Filter: Filters water further to ensure removal of finer particulate impurities.

Stage 4th:

RO Membrane: Removes dissolved salts, hardness, pesticides, fluoride and heavy metals like arsenic, lead and mercury. It also removes microbial contaminants like bacteria, virus, protozoa cysts.

Stage 5th:

UV Chamber: Acts as an additional stage of purification to further inactivate bacteria, virus and parasites to deliver safe water.

Stage 6th:

Post-RO Carbon Filter: This level of purification acts as a polisher and enhances the taste of purified water.

Stage 7th:

Carbitrap: Filters water to further ensure removal of loose carbon particles

What is the storage capacity of Pureit Vital Max?

Pureit Vital Max has Storage Tank capacity of up to 6.5 to 7 litres under running water conditions. The storage tank is fully automatic and well shielded and as and when you take water out of the tank, the purification process starts automatically again and refills the storage tank.

How much time does it take to purify water in Pureit Vital Max?

Pureit Vital Max can purify water up to 24 litres per hour. However, the time taken to purify depends on the life of the filters, the input water pressure, TDS and other impurities present in the water.

Does Pureit Vital Max remove arsenic, fluoride and nitrates?

Like other ions, the RO technology can also remove arsenic, fluoride and nitrates. However RO system is not recommended for arsenic level above 0.1 mg/L, fluoride level above 8.0 mg/L and iron level above 0.3 mg/L.

How will I get new consumables/membranes replaced?

You need to call the Pureit helpline and order the consumables. The customer care specialist will visit your place and replace the consumable/Germkill Kit at a nominal cost.

What are all the consumables which are to be replaced?

You need to replace / clean the sediment filter basis water quality and GKK approximately every 1 year from date of installation. In case of poor source water quality or low water line pressure few filters may need to be replaced before 1 year and are not part of warranty.

Can I drink the first purification cycle of water from the purifier?

No, recommendation is to throw the first cycle of water that is filled in the storage tank when the new Pureit purifier is installed and also whenever the Germkill Kit is replaced.

Can I open and service my purifier?

It is not recommended to open and service purifier by an individual. Call our Pureit helpline if you face any issue which requires servicing and opening of the purifier.

Can I use reject water?

It is not recommended to use the reject water for any kind of human/pets consumption (drinking or cooking). It may be used for gardening or cleaning floors.

What should I do if any part of purifier is broken?

Please call the Pureit helpline. Our technicians will visit your house and guide you on the repairs required. There will be a nominal visiting charge and you would need to buy the parts required.

What should I do if there is leakage from the purifier?

First switch off the ball valve if you find any leakage from the purifier and turn off the power switch. Check for any visual improper fitment and then call our Pureit helpline number and register a service request.

How long can the stored water in Pureit Vital Max be used for drinking?

You can use stored water for 2 days. If it is not used for more than 2 days we advise you to discard that water, refill and then consume.





To know more

Contact Pureit helpline number

1860 210 1000

Or Visit: www.pureitwater.com

Or Scan to connect via Whatsapp 

